

Year in Review



General Church Annual Report Fiscal Year 2015

The General Church exists to help people throughout the world draw closer to the Lord God Jesus Christ in His Second Coming, thereby finding peace, happiness, and meaning in their lives.



Bishop's Report

Rt. Rev. Brian W. Keith

We at last achieved a balanced General Church budget! It may seem odd to begin a report with comments about the budget, but it has been a significant factor we have been wrestling with for over five years. We made sizable reductions in personnel and support for uses in Outreach and Education and many other areas, weighing one useful program against another, and deferring virtually any new uses. The expense budget, from a peak of \$9.4M in FY10, is now \$4.6M, a reduction of 51% over six fiscal years.

Many factors allowed us to arrive at this place. The extensive reductions in central office departmental budgets, the reduction of staff, significant changes to the benefit plans for all remaining employees by shifting from defined benefit plans to defined contribution plans, and congregations reducing their grants from General Church central funds (with a huge assist from the Healthy Church Match), were key

factors.

We will now have to be careful to maintain a balanced budget, but at least we do not have the burden and pain of reducing uses.

With the publication of the *Four Doctrines*, the Rev. Bruce Rogers has now fully retired from his work as a translator of the Writings. His major works were:

- Divine Love and Wisdom
- Divine Providence
- Three Short Works – De Verbo, Last Judgment Posthumous and Precepts of the Decalogue
- Conjugal Love (or Married Love)
- Apocalypse Revealed
- Four Doctrines

In addition to these English translations, whenever Bruce translated a work, he first prepared

“We will now have to be careful to maintain a balanced budget.”

a critical Latin edition. This required a careful analysis of the first printed edition with Swedenborg’s first draft. (We do not have the “clean” hand written copies. They were sent to the printers for publications and were all destroyed.) Bruce’s scholarly work will be invaluable for all future translators.

This is an incredible body of work and treasure to the New Church. We owe a debt of gratitude to Bruce for his dedication to this work and the fine translations and critical editions that he produced.

At this point the General Church Translation Committee is considering who the next English translator might be. As it took a complex arrangement and some time for Bruce to be able to do this, we anticipate this may be the case again. In the meantime, the Rev. Kurt Nemitz is translating the *Index* to the work *Spiritual Experiences* (never before translated into English) and we are re-allocating some of our resources to translation in Korean and other languages.

Our Washington congregation in Mitchellville, Maryland, has now completed an extensive renovation of their church and school building. They have redesigned the chancel and sanctuary, added a beautiful spacious lobby, providing central access to all areas of the building, and made many other improvements, from the new glass doors at the front entrance to heating, lighting and air-conditioning.

The re-dedication on November 23, 2014 was a tremendous celebration, as one can see from the pictures and article in *New Church Life*. During the ceremony the original keys and new keys to the building were brought forward together, showing how they are building on their

past and looking to the future.

The ordinations which took place during the year indicate the international nature of the General Church. These were:

Name	Degree	Location of service
Alex Adognon	2 nd degree	Togo
Fred Ang’asa	1 st degree	Kenya
Jean Atta	2 nd degree	Los Angeles
Chris Barber	2 nd degree	Bryn Athyn
Brett Buick	1 st degree	Bryn Athyn
Jared Buss	1 st degree	Bryn Athyn
Alan Cowley	2 nd degree	London, England
Thomas Floyd	1 st degree	Bryn Athyn
Joel Glenn	1 st degree	Bryn Athyn
Young Ho Jung	2 nd degree	Seoul, Korea
Emmanuel Juma	1 st degree	Kenya
Soon Cheol Lee	2 nd degree	Seoul, Korea
George Magera	1 st degree	Kenya

Among the pastoral moves during the year, the Rev. Henry Joel Kouassi who had been serving in the Ivory Coast, accepted a call to serve a New Church congregation in Mauritius, which had been without a pastor for a number of years. This is in effect a “loan” since the congregation has historically been connected with the British Conference. (There is no thought of them joining the General Church.) Both countries are French speaking, so language was not an issue.

Three clergy entered the spiritual world during the year. Jiro Kamazawa in Japan had only been recently inaugurated into the priesthood, fulfilling a lifelong dream. Nicholas Anochi was one of the founding pastors in Ghana and a pow-

Pastoral Moves

Fred Ang'asa – Kenya, continuing to teach in the Etora school and developing a congregation near Lake Victoria

Brett Buick – Kempton, assistant to the pastor

Jared Buss – Toronto, assistant to the pastor

Jim Cooper – retiring and residing in Toronto area

Michael Cowley – Toronto, head pastor

Thomas Floyd – resident in Norway, serving uses in Scandavia

Joel Glenn – Oak Arbor (Detroit), assistant to the pastor

John Jin – moving to part time with Philadelphia Korean NC, and taking up translation

Emmanuel Juma – Kenya, Masai congregation

Yong Ho Jung – Seoul, Korea, head pastor

George Magera – Kenya, pastor of the Kiagware congregation

Brian Smith – Washington, assistant pastor and principal of school

Kyu Dae Yang – retiring as pastor of Seoul, Korea



The ordination of George Magera in Kenya

erhouse of outreach. And Alfred Mbatha had served the church in South Africa for many years and was looked to as a kind of spiritual father by many.

One of the important responsibilities for the Episcopal Office is to support pastors and congregations around the world. Much of that is done by regular interactions and communications. But physically visiting locations is a vital part of it. Last year travel in North America included: Atlanta, Austin, Bay Area (California), Boston, Boynton Beach, Los Angeles, Oak Arbor (Detroit), Philadelphia Korean New Church, Toronto (Canada – three times due to supervising their pastoral change), and Washington for the rededication of their building. There were also three international trips to South Africa, Kenya and Korea.

The Regional Pastor system is a type of middle management. Regional pastors supervise geographic areas and provide more frequent support for local pastors and congregations, often leading the pastoral change process. They also participate in the Advisory, the group who counsels with the Episcopal Office on all pastoral moves and other clergy personnel issues in the church. With Jim Cooper retiring, Brad Heinrichs has assumed that role for Canada. And Derek Elphick is now the Regional Pastor in the Midwestern US. These are additional duties for these men and we thank them and their

congregations for it.

We experienced several key administrative central office staff changes. Our beloved and exceptional Alaine York retired as GC Secretary. Anita Halterman assumed the office on a part time basis, in addition to her responsibilities as administrative assistant in the Office of Outreach. Jessica Carswell stepped down as head of Advancement. This has led to some reorganization of the office in cooperation with the Academy. We are still in process with this. And Kristine Farmer, our very capable central office administrative assistant, completed her degree in theater management and found a position in her field. Kelly Treacy has now assumed this use.

Looking forward, we have been engaged in strategic planning. Part of the process is to take stock of where we are as a church, and to consider what we could focus on together in the next three to five years. We have been assessing strategies that not only address our known tension-points, but also concentrate on what has always made the General Church strong, namely its spiritual message. We have engaged the clergy and the General Church Board in this process and hope to have the plan completed sometime in the coming year.

Rt. Rev. Brian W. Keith, Executive Bishop
Brian.Keith@newchurch.org

Assistant to the Bishop's Report

Rt. Rev. Peter M. Buss, Jr.

Visiting Minister Program

In the United States alone, 27 groups without a resident pastor received 145 visits for worship services, provided by 20 different ministers. Readers might be interested to know that additional groups receive similar visits in Canada, Europe, Scandinavia, and other locations. This is in addition to a growing number of people who connect online each Sunday to watch Cathedral services, or New Church LIVE. It is a pleasure to administer this part of our General Church activities, as it provides us with a steady stream of gratitude coming from these groups, because of their continued connection to the General Church and ability to gather for worship in their areas. The dedication that is out there, with people sometimes driving 1 to 3 hours to get to church, is amazing. Many thanks too to the ministers who are willing to carry on this important work.

Around the Church

Hitting the road is also something that people in the Central Offices do, to facilitate communication and connection throughout the church. In England, for example, my wife and I experienced a fantastic British Academy Summer School; in Glenview, I met with a number of school administrators; in San Diego, I was privileged to visit with some western clergy pastors during their regional meetings; in Ghana, David Frazier and I met with the clergy leaders of five West-African nations to discuss priorities and financial realities; in South Africa, I visited with the congregational representatives of the South African Corporation, and separately with the clergy for interim meetings; in Florida Teresa and I experienced another wonderful Boynton Beach Retreat. We also had the opportunity to visit Lake Helen, Boulder, Charlotte, Baltimore, Harleysville, Togo, and Pittsburgh.

The Church in Africa

In West Africa, we have 25 active ministers serving in 20 congregations, some of which are established and others just getting started. There

are 2 elementary schools, with hopes to launch another school and expand an existing one into high school. There is one theological school, with a second hoping to reopen shortly. In East Africa (Kenya), we now have 4 ministers, 2 congregations, one school, and an orphanage. In South Africa, we have 6 active ministers and 2 candidates serving 7 congregations. There is one school and a preschool.

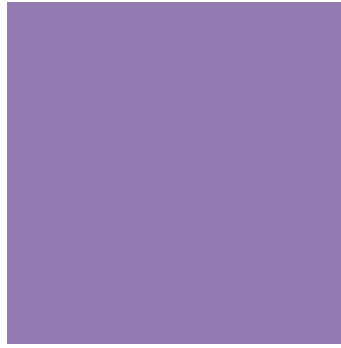
Over the years, the General Church has been able to help get things started in these countries, through training of ministers, translating, grants, and stipends for many of the ministers. As the number of congregations has grown in these countries, and many more ministers have come through our schools, the General Church is finding it increasingly difficult to fund operations in parts of Africa in the ways we have been. This situation has obviously become all the more difficult as the General Church overall has had to cut back on its expenses in an effort to balance its yearly operating budget.

Since we continue to care deeply about the support of the church in Africa, we have been meeting with local leaders in the countries where we have congregations to figure out how best to use the limited resources we have. We are pleased to report that we are still able to send amounts in excess of \$400k per year to assist with the efforts there. We are also grateful for the creative and ongoing efforts of the people working in these countries to raise funds from local sources for their church uses. Nevertheless, we will need to continue to strive for sustainable models in these countries, and to plan for the growth that is likely. Significant efforts went into meetings to this end this past year. More work is needed, but the engagement around this important challenge is well underway.



“As part of the Episcopal team, many of my professional activities fall under items in the Executive Bishop’s report. I can comment, however, on a few things that round out the picture of General Church activities in the 2014-2015 year.”

Rt. Rev. Peter M. Buss, Jr.
Peter.Buss.Jr@newchurch.org



Outreach

Rev. David Lindrooth

The close of 2015 brings several advancements in our Outreach efforts. One small one was the opportunity to speak at the Carl Bernard Wadström International Conference against Human Trafficking held at the Swedenborg House in London in June, 2015. The conference, attended by representatives from 15 international universities, the Lord Mayor of London, and the Swedish Ambassador to the UK, was a notable chance to showcase

New Church theology and a group of early church members who played a key role in the abolition of the slave trade throughout Europe. This was a good networking opportunity to speak to the spiritual teachings that drove Wadström and his colleagues in the 1790's to call to abolish slavery. Today, New Church teachings on human freedom continue to make a powerful statement that influence the world's stance toward human trafficking.

“The close of 2015 brings several advancements in our efforts.”

Newchurch.org

We are proud to have launched (Aug 2015) the redesigned newchurch.org website, along with 3 associated and complementary websites (journey.newchurch.org, education.newchurch.org, and about.newchurch.org). This was the culmination of over 12 months of design and implementation work.

For FY 2014/2015 we have welcomed 288,627 unique visitors to view our website. Website traffic is pretty much directly proportional to our advertising budget, and is in line with the reduced budget for the fiscal years. We continue to get significant numbers of new subscribers to Journey program emails, and people looking for spiritual support and answers by emailing us from the website. We welcome contributions toward our advertising as we recognize that dollars contributed toward advertising allow us to serve more people, introducing them to the helpful truths offered in New Church theology.

To date, we have 8 society/school websites using our redesigned theme, with 3 more in process.

While we have minimized internet advertising for the New Church Facebook page due to funding reductions, slow growth continues, with over 19,000 Facebook “fans”, and a weekly reach to around 30,000 users.

Plans for the 2015/2016 fiscal year include merging the content of the older New Church Vineyard website with the newly launched education.newchurch.org site, adding the capability to phase in additional content from General Church Education to provide a “one-stop-shopping” experience for all GCED content. This is contingent upon fund-raising efforts for GCED.



Sunroom Groups

Sunroom Groups is about making group content easy and instantly accessible. In January, 2015, Outreach assumed leadership of the small group project called the Sunroom Project, which we are developing in partnership with New Church LIVE. You can view this initiative by going to www.sunroomgroups.org.

Sunroom is designed to offer gateway video content and training to lay small group leaders who have access to the Internet. The program began its development after recognizing that most people willing to lead groups have very little time to devote toward adequately preparing. The Sunroom website is the result of an effort to make it as easy as possible for a group leader to facilitate an exciting group with professional, thoughtful content set up to help people find spirituality in their daily lives. Starting a group is as simple as gathering a few friends, opening a laptop and playing one of the content videos from Sunroom’s growing digital library.

One example of content comes from the collaboration between the New Church Journey and the Sunroom team. This resulted in a 7-video series for Living Gratefully that became available in September, 2015. The videos are now

It is widely recognized in church growth research that small group systems in churches are a key method to stimulate congregational growth.

available online at www.sunroomgroups.org/videos.

The Sunroom team has now also launched a Google advertising campaign that will offer its product into the mainstream of North America initially targeting those who identify as “spiritual but not religious.”

Journey Programs

Small Group Systems Retreat 2015

In April, 2015, Outreach hosted the Small Groups System Retreat in Bryn Athyn, PA, where over 40 individuals representing 12 different congregations gathered together for two days and created strategic plans for increasing the roles of small groups within each local church. This workshop was facilitated by Steve Gladen of Saddleback church, who worked with Outreach and a few groups last year. The use of Small Group strategy in a church allows the congregation to better involve lay leaders in creating environments where members support each other, where they serve others outside of the congregation, and where they can easily invite others to enjoy learning about how the theology of the New Church works to support everyday life.

It is widely recognized in church growth research that small group systems in churches are a key method to stimulate congregational growth.

Living Gratefully

The 2015/16 Journey program workbook has been published! This year’s series “Living Gratefully” focuses Swedenborg’s *Divine Providence* and the five laws of providence therein described. Last year’s “What Would Love Do?” program met

with so much success, we’re excited to offer this as a follow-up in exploring the gifts given to each of us from the Lord.

More Small Group Program Workbooks

Last year the Journey team began a new relationship with the Bryn Athyn Church by sharing some staff time to support Bryn Athyn in transitioning to the small groups model described above. This has been a successful strategic alliance that has helped us improve our offerings to the church at large. This arrangement, which continues in the current year, has allowed for the creation of more small group content than we’ve previously been able to produce. Aside from the “Living Gratefully” workbook, we’ve published three new 4-5 week series: “Practicing Mindfulness” which brings stillness and purpose back into participants’ lives, “Meditations on Compassion” that looks at what it means to hold all levels of the neighbor and oneself in a space of understanding and love, and “New Church 101” as a newcomer orientation to the basics of New Church theology. Each of these series was developed for established small groups in Bryn Athyn to use.

New Church Connection

- Issues published this year: Gathering in Community, Prayer: More than Words, Creativity and Spirituality, Love in Action
- This content is also used in newchurch.org
- Hits to Connection webpages: 104,765 unique visits for an average of 2:53 minutes
- Facebook: 837 likes

- Online email subscribers: 479
- Most popular issues online: Dealing with Fear and Worry, Heaven and Angels, Forgiveness
- Most popular articles: “Live with Less Anxiety and More Joy” by David Roth from “Dealing With Fear and Worry” (Issue 5.2009) and “What Happens When We Die?” by Jonathan Rose from Heaven and Angels (Issue 5.2015)
- Most popular article published this year: “8 Ways My Prayer Life Has Been Transformed” by Bronwen Henry

Church Plants

One notable shift in the church plant strategy has been the congregations’ transition into the small group systems that we have been promoting through our Journey efforts. The congregations’ shift toward an emphasis on lay-led small groups is helping with growth, sense of purpose for the congregations and is developing enthusiasm among members. All of the congregations are making gradual progress forward, especially being recognized for the impact they are making in their communities. Seattle’s Light for Life is noted for its massive presence of young adults in the church – though they are recovering from several families moving out of town; and New Church LIVE continues its tremendous growth curve with more than 700 people now counted as frequent attenders.

Rev. David Lindrooth
Director of Outreach
David.Lindrooth@newchurch.org

General Church Education

Rt. Rev. Peter M. Buss, Jr.

The use of New Church education is carried forward by many people within our system, including teachers and administrators in 11 preschools, 12 elementary schools (3 of which extend into the high school years), the Academy of the New Church Secondary Schools, and Bryn Athyn College. General Church Education, formerly known as the Office of Education, provides direct support services for 6 of the preschools and 9 of the elementary schools which form the General Church school system, and it coordinates in various ways with the other schools.

In addition, General Church Education seeks to provide religious educational programming for the many homes and Sunday Schools within the Church. It does so through such things as the Journey Sunday School series, videos, Jacob's Ladder lessons, books and gifts to families with young children, newsletters and the like.

Gatherings

There is tremendous value in bringing together groups of people who work in the field of New Church education, or are served by our collective efforts. Several such gatherings happened in the 2014-2015 year.

- A School Administrators' retreat in September in Glenview, attended by 25 representatives from 9 of our schools as well as our GC Ed office.
- A "Looking to the Future" planning gathering focused on homes, Sunday schools and preschool education. This took place in Bryn Athyn in January, and was attended by 24 people.
- A gathering of 30+ teachers at the Bryn

Athyn Church School in the summer months to work on the Social Studies and Geography curricula. Teams also worked on refreshing the Literacy strand.

- A gathering of 8 teaching ministers together with 2 educational professionals to work on the 4th through 8th grade Religion curriculum. Work on that update is largely complete and is now in the implementation stage.
- Eight Education Leadership Team meetings via conference bridge. These took place in 3 groupings: school administrators, school pastors, and both groups plus a few others.
- Scott Daum also traveled to almost all of our schools to present on the subject of "Habits." This is part of a renewed effort to provide continuing education in the teachings we have related to education, and to rally around the use itself.

Journey Sunday School Programs

A significant way we serve children is through the Journey Sunday School series. This year we completed work on a seven-week series called "Hands of Love" to go along with the "What Would Love

Do?” Journey Program. The focus was on parables and miracles from the life of the Lord. We also began work on the next series, called “Lead and Guide Us” as a companion for the “Living Gratefully” Journey Program. This six-week program, now complete, focuses on stories from the first half of the book of Exodus. As we developed these lessons, we designed them to be able to stand alone in our ever-growing collection of lessons on the stories of the Lord’s Word.

School Support Visits

Another very important part of our work is to coordinate support and evaluation visits for many of the teachers in our system. This year, our team at General Church Education, together with the Senior Teachers in our system, was able to provide 32 teacher observation visits. We also put together a successful appeal for a larger effort toward teacher professional development, and have recently hired a full-time staff person to help us supercharge our efforts in this direction.

Updating Our Web Presence

As a part of the newchurch.org refresh project, General Church education launched a mini-site, which can be accessed at education.newchurch.org. The updated look is cleaner, much more visual, and most importantly mobile-friendly. An updated list of all General Church affiliated schools is attractively presented with school logos and links to individual websites. The home and Sunday School materials are organized by age level for ease of use.

We see this mini-site as an interim step, however. We are already hard at work on a comprehensive, searchable site for our vast and growing database of lessons, videos, worship talks, songs, and the like. The finished product will provide a never-before achieved one-stop site which provides access to the majority of our resources.

Other accomplishments over the Year

- A significant update of the form and process of the Support and Evaluation System for teachers.

- The addition of 3 new Senior Teachers in our system.
- The production of 12 videos—7 for the “Hands of Love” Journey Sunday School series, 3 for the festival times of Christmas, Easter, and New Church Day, and 2 for a young families mailing. As of June we had a catalogue of 53 videos, a running log of over 500,000 views on our YouTube channel, and just under 500 subscribers.
- Jacob’s Ladder, Introductory Level, transitioned to online accessible format, instead of printable only.
- A study on the use of New Church education, presented in five locations and published in New Church Life.

Mailings to families With Young Children

The final effort we comment on in this report is particularly heart-warming. We received a donation allowing us to reach out with four “gift” mailings to about 400 families within the church with children ages 0 to 6. Our Christmas mailing included a children’s book called “A Child is Born,” written and produced by General Church Education. A February mailing focused on videos of the story of Samuel. An Easter mailing included a CD of Easter songs, also available in downloadable format. Our New Church Day mailing presented children with a puzzle picturing the Rider on the white horse. We have greatly enjoyed the positive feedback we have received based on this project, and intend to keep going with it in the current year.

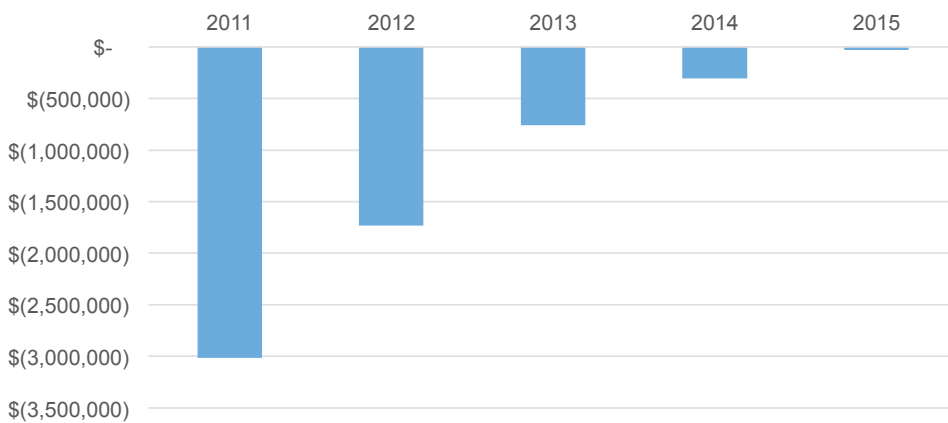
It continues to be a great pleasure to coordinate with the many people working in the field of New Church education. In so many ways, the use is alive and well, as families turn to the church for help in raising their children with the Lord in mind, and the church responds.

Rt. Rev. Peter M. Buss Jr.
Peter.Buss.Jr@newchurch.org

Central Office Financial Update

Wendy Cooper & Dave Frazier

A: Reduction of Operational Deficit - 5 Year History:



“Much credit for this progress goes to the dedicated employees of the church and schools.”

For the period ending June 30, 2015, our Operating Fund had a surplus prior to unusual/non-recurring expenses for the first time in many years, and we posted a small deficit of \$32k after non-recurring items.

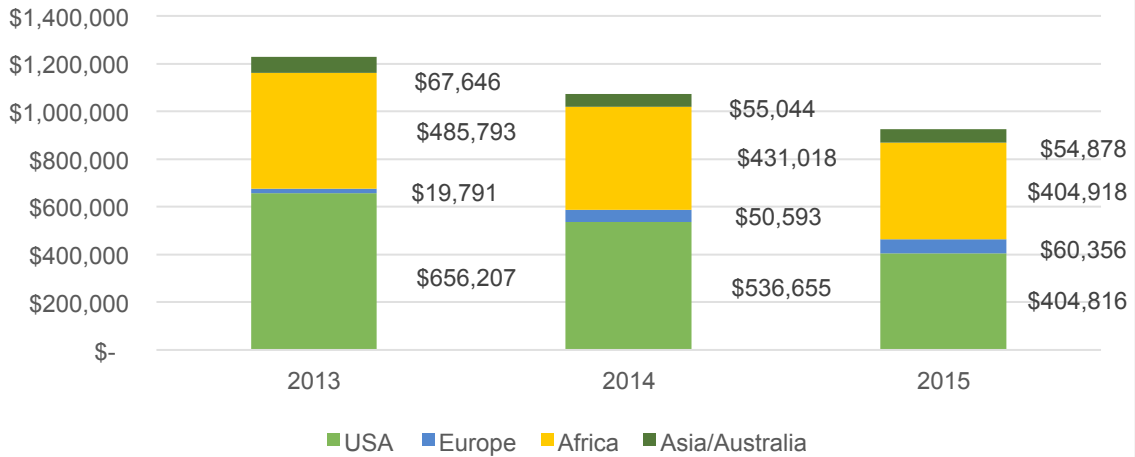
Chart A depicts the last five years of deficit reduction work. Much credit for this progress goes to the dedicated employees of the church and schools. Program and administration services have been reduced by approximately \$2.7m during this period. Many of the employee benefits have been significantly restructured to a healthy, sustainable offering, and in some cases certain offerings have been discontinued. Time has helped local congregations that have made significant headway on their individual paths to self-sufficiency by finding ways to reduce their grants.

The Healthy Church Match (HCM) Program has been instrumental in assisting some congrega-

tions to move forward toward self-sufficiency. The program is now in a closed phase and as of August, 2015 the General Church has distributed over \$8.1M in match dollars to participating congregations. An additional amount of approximately \$2M from outstanding pledges on record is anticipated before the program completely ends in FY2019. The actual benefit to congregations is double this when the match-eligible gifts are taken into account: thus we anticipate a total fundraising result to congregations of over \$20.3M.

Some groups have used their HCM funds for capital improvements to their schools and places of worship, making their locations more functional and appealing to both current members and new friends. Schools have used this income to bolster their endowments, providing a source of additional revenue that will last long into the future. This additional annual revenue from the school endowments has been instru-

B: Congregational Grant Worldwide Distribution



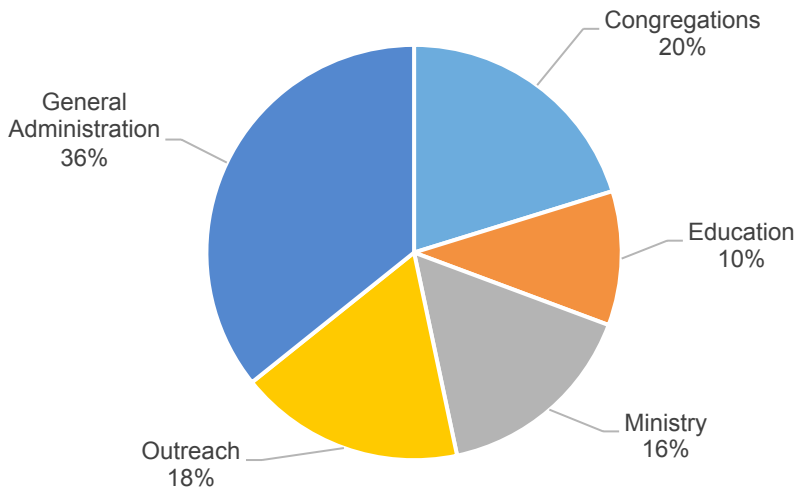
mental in reducing the congregational grant expense of the Central Office. Chart B depicts how the Central Office distributes congregational grant funding worldwide, and how those grants have been reduced over the last three years.

The reductions made in FY2014 and FY2015 represent an overall expense reduction of \$304k in the Central Office Operating Fund, \$251k of which has come from congregations in the United States.

Reducing congregational grant expenses has only been one part of our objective in reaching a balanced budget, however. The Central Office departments have made huge strides in reducing expenses as well. Expense reductions in the Central Office departments over the same time period (FY13 to FY15) totaled \$437k. Chart C describes how FY15 expenses were allocated by use.

General Administration is still the largest part of our budget, but it should be noted that costs in this section are comprised of functions such as the Episcopal Office, Human Resources (including Payroll and Pension administration), Finance, Investment, and Advancement, all of which exist for the sole purpose of supporting uses

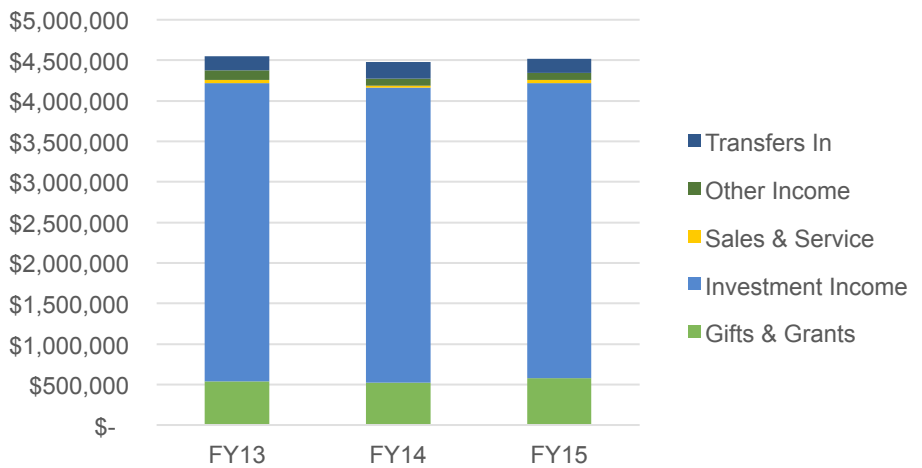
C: FY15 Expenses Allocated by Use:



like worship and New Church education in congregations all over the world. The remaining categories represent the programs and departments that provide resources more directly to you, including areas such as GCED, Journey, Newchurch.org, congregational grants that provide critical operating revenue to societies and schools, translation, and the training and ongoing professional development of ministers.

D: Operating Income - 3 Year History

We have also been working hard at the income side of our budget, which is equally important in achieving balance. Chart D shows a three-year history of our total operating income, broken out by income type.



Investment Income from endowment in the New Church Investment Fund (NCIF) continues to be the backbone of our annual income. This component has decreased slightly (1.3%) over this three year period, primarily because of the resources we have distributed to congregations through the Healthy Church Match Program, and to a lesser extent the withdrawals we've had to make to fund operational deficits. Income overall has remained relatively flat in this period, and we hope to see the proportion of our total income coming from Annual Fund gifts increase over time, to reduce our absolute dependence on the investments, as we believe this would be an indicator of greater health and sustainability for our organization.

Gifts to the Annual Fund shown here are only a small portion of the total gifts processed by our Advancement Office each year; a rather large portion of our gifts are either transitory (e.g. we receive a gift for a congregation and forward it along) or restricted (e.g. the gift is for an endowment fund or special project). Likewise, the operating expenses discussed above are only part of the total picture. Some of the "non-operating" functions which are covered from restricted gifts or board-designated endowment funds and their corresponding FY15 total expenditures are listed in the table above.

Restricted Fund/Use	FY15 Expense
South America Fund – supporting the church in Brazil	\$ 187,000
Capital Fund - depreciation of fixed assets	\$ 123,000
Healthy Church Match - GC's match	\$ 510,000
NCIF Dedicated Funds: Payout to Congregations	\$ 547,000
Ministers' Technology Fund	\$ 37,000
Pension Disbursements to Retirees	\$ 3,488,000
Retiree Health Plan Payments and Distributions	\$ 658,000
Helping Children in Crisis – Sacred Care Orphanage in Kenya	\$ 71,000
Real Estate Development Fund Grants and Loans	\$ 212,000

The Finance team here is sincerely dedicated to serving the needs of the church and supporting the sustainability of this organization for the future. We are also excited about the programs we have the privilege of supporting throughout the church. If there is anything we can be doing to serve you more fully, or any questions we can answer, please do not hesitate to reach out to us.

Wendy Cooper, Controller
wendy.cooper@newchurch.org

David Frazier, Executive Director
david.frazier@newchurch.org



Membership Report

2014-2015

Between July 1, 2014 and June 30, 2015, 56 new members were received into the General Church, and 19 members resigned. During the year the Secretary's office received notice of the deaths of 55 members.

Membership July 1, 2014	5429
New Members	56
Resignations	19
Deceased Members	55
Membership June 30, 2015	5411

A complete report can be found in the November/December 2015 edition of New Church Life.